

U/S ROOF/RIGGING STEEL
ELEVATION +83'-1" (25.32m)

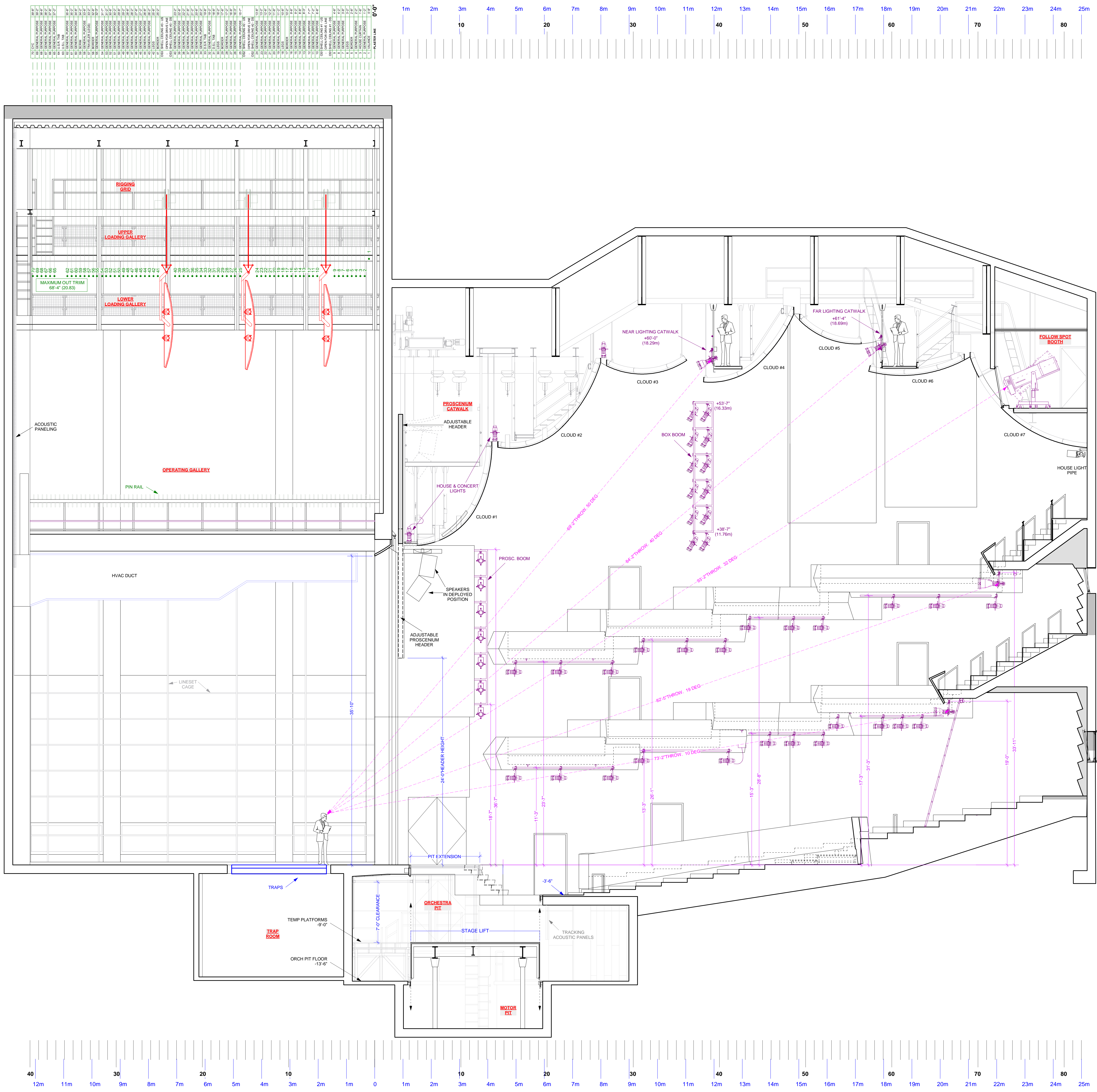
RIGGING GRID
ELEVATION +76'-1" (21.79m)

UPPER LOADING GALLERY
ELEVATION +70'-9" (21.56m)

LOWER LOADING GALLERY
ELEVATION +62'-9" (19.13m)

OPERATING GALLERY
ELEVATION +38'-5" (11.71m)

STAGE FLOOR
ELEVATION 0'-0" (0m)



12m 11m 10m 9m 8m 7m 6m 5m 4m 3m 2m 1m 0 1m 2m 3m 4m 5m 6m 7m 8m 9m 10m 11m 12m 13m 14m 15m 16m 17m 18m 19m 20m 21m 22m 23m 24m 25m

CHANGES AFTER VISIT REVISION		KLS 2/05/03 1	BY DATE No.	Bard College Performing Arts Center Annandale-on-Hudson New York, 12504-5000		DATE February 5, 2003	PRODUCTION THEATER 1
				REVISION 1	TITLE SECTION ELEVATION - CL TO SL	PRODUCTION MANAGER George Pawl	SCALE 1/4" = 1'-0"
						PLATE 2 of 2	